

**MULTI-FAMILY & MIXED USE**



# FORGENT<sup>®</sup> SERIES

Known for strength, performance and ease-of-installation, Kolbe's Forgent Series is an ideal choice for multi-family and mixed use projects. Designed for long-term durability, these energy efficient windows and doors provide comfortable spaces.

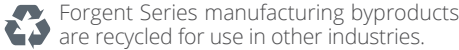


# STRENGTH. PERFORMANCE. EASE OF INSTALLATION.

## THE FORGENT® SERIES

Kolbe's Forgent Series windows and doors feature a proprietary material and thoughtful design, making them simple, convenient and easy to install. Coordinated with construction timelines, the units are delivered to the jobsite ready for efficient installation, making the Forgent Series a perfect choice for any multi-family or mixed use project.

Made from an innovative recyclable material, Forgent Series windows and doors promote sustainability in today's environmentally responsible building projects.



## CONSTRUCTED FOR JOBSITE EFFICIENCY & SUCCESS

### THE FORGENT SERIES OFFERS:

- Energy efficiency & impact performance options to meet local climate demands
- An advanced ladder design with multiple chambers for high performance & strength
- Ability to meet or exceed ENERGY STAR® requirements for every zone in the U.S. with standard glass types
- Welded sash & frame corners to prevent air & water infiltration
- Innovative Glastra material for low maintenance & durability
- Three convenient certified installation methods: integral nailing fin, installation clips, & screw through frame

### PRODUCTS

*All Glastra or Glastra/Wood windows*

- ▶ Crank-out casements
- ▶ Crank-out awnings
- ▶ Double hungs
- ▶ Sliding windows
- ▶ Geometric windows
- ▶ Direct sets

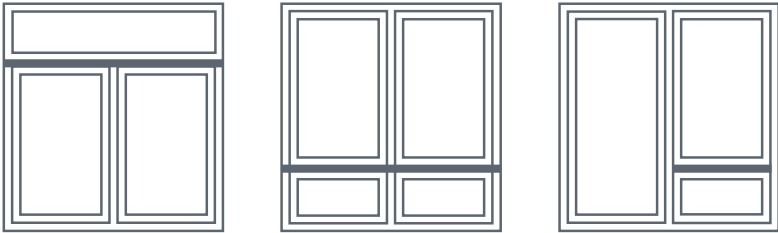
### COMPLEMENTARY

*Select doors designed to complement Forgent Series products*

- ▶ Swinging patio doors
- ▶ Sliding patio doors

### MULL CONFIGURATIONS

Factory-mulled windows can be shipped to the jobsite ready for field installation. Endless mull configurations allow you to combine multiple windows and doors in various horizontal or vertical arrangements.



### SIZES

The Forgent Series offers larger window sizes that allow more daylight into the building and make living areas feel more spacious.

Maximum shippable size is 114" x 101". Please see a Kolbe representative for more information.



# PROPRIETARY GLASTRA® MATERIAL. UNPRECEDENTED DESIGN.

## GLASTRA®

Forgent Series products are comprised of Glastra, a proprietary hybrid of fiberglass and UV stable polymer, formulated for strength and resilience. To suit various performance requirements, a Glastra exterior and a choice of Glastra or Wood interior is available in select colors and finishes.



GLASTRA EXTERIOR  
WITH GLASTRA INTERIOR

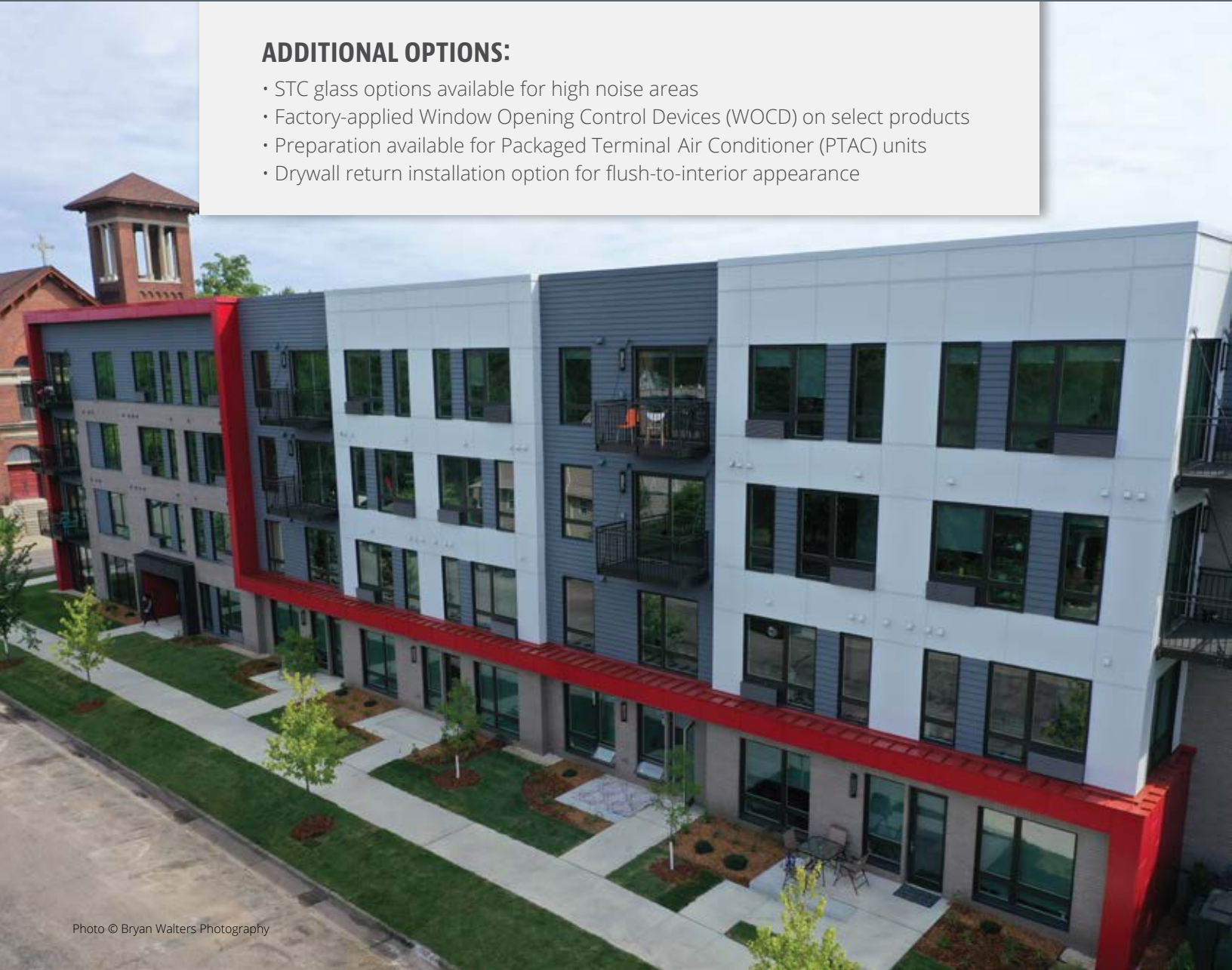


GLASTRA EXTERIOR  
WITH WOOD INTERIOR

SEE THE STRENGTH OF FORGENT SERIES AT  
[KOLBEWINDOWS.COM/GLASTRA](https://kolbewindows.com/glastra)

### ADDITIONAL OPTIONS:

- STC glass options available for high noise areas
- Factory-applied Window Opening Control Devices (WOCD) on select products
- Preparation available for Packaged Terminal Air Conditioner (PTAC) units
- Drywall return installation option for flush-to-interior appearance





## SEE THE SPAN OF FORGENT SERIES PROJECTS

Project	Developer	Description	Location
Local 15 Apartments	Reuter Walton	3-story Apartments	Minneapolis, MN
The Central	Yellow Tree Development	4-story Apartments	Minneapolis, MN
Nineteen North	ARC Development	4-story Apartments/Mixed Use	Buffalo, NY
The Whit	Yellow Tree Development	5-story Apartments	Minneapolis, MN
RiverPark Place	Poe Companies	7-story Apartments/Mixed Use	Louisville, KY
Amphora Coach Homes	The Bove Company/Gabe Bove	2-story Townhomes	Jacksonville, FL
Wildbriar Estates	Home Leasing	2-story Apartments/Townhomes	Livonia, NY
Living Oaks Assisted Living	ILA Corporation	1-story Apartments	Iola, WI
Freedom Manor	Housing Authority Birmingham District	6-story Apartments	Mobile, AL
Jax Apartments	Yellow Tree Development	4-story Apartments	Minneapolis, MN
74 University	480 Eastman LLC	2-story Apartments	Rochester, NY
The Carnegie	LeFrois Builders & Developers	4-story Apartments/Mixed Use	Rochester, NY
Crystal Flats	Crystal Pickens LLC	4-story Apartments/Mixed Use	Bentonville, AR
Stratford Arms Apartments	RP Oak Hill Building Co., Inc.	4-story Apartments	Buffalo, NY
29 Bryant Apartments	Yellow Tree Development	6-story Apartments	Minneapolis, MN
Odie Apartments	Yellow Tree Development	6-story Apartments	Minneapolis, MN
The Camille North Apartments	Gary Ahern/Focal Point	3-story Apartments	Mountain View, CA
625 Goodman	Mark IV Enterprises	4-story Apartments	Rochester, NY
Lexington Tower	Decatur Housing Authority	6-story Apartments	Decatur, IL
KS Broad	KS Broad Street LLC	5-story Apartments/Mixed Use	Ridgewood, NJ
1585 Hertel Avenue	RP Oak Hill Building Co., Inc.	5-story Apartments/Mixed Use	Buffalo, NY
Gateway Longview	RP Oak Hill Building Co., Inc.	2-story Apartments	Buffalo, NY
15 Allen Street Lofts	Peyton Barlow	3-story Apartments/Mixed Use	Buffalo, NY
Air National Guard	Alabama Air National Guard	2-story Apartments	Birmingham, AL
Project HOME – Rowan Judson Diamond Preservation	McDonald Building Co.	3-story Apartments	Philadelphia, PA
Cedar Point Townhomes	John Volmary	2-story Townhomes	Eagle Lake, MN

Front and back cover photos © Kim Smith Photo

© 2020 Kolbe & Kolbe Millwork Co., Inc.  
Kolbe & Kolbe Millwork Co., Inc. reserves the  
right to change specifications without notice.

5178930-2.5K-1220-RP

[www.kolbewindows.com](http://www.kolbewindows.com)

**KOLBE**  
WINDOWS & DOORS  
We're for the visionaries.™