



Commercial Capabilities

KOLBE
WINDOWS & DOORS



We're for the visionaries.™



We're for people who take building to new levels.

We're for people who are passionate about design, who care about the big picture and the smallest detail. We're for people who aren't satisfied with mainstream options. They push the limits of what's possible with the options, innovations and custom solutions that can only be found in Kolbe windows and doors.



We're for expertise.

We're for people who dream of a personalized design experience. That's why you can't find Kolbe windows and doors in the aisles of a home center. You can only purchase our products from a Kolbe dealer, because Kolbe dealers are as passionate about windows and doors as you are about bringing your vision to life.

Leave the details in the hands of a Kolbe window specialist. They'll work with you to make your dream a concrete reality.

We're for possibilities.

We're for people who don't want to compromise their vision to fit anyone else's idea of "standard." We're for handmade touches and virtually limitless options that can't be found within the aisles of a home center.

At Kolbe, each product is truly built to order. Our team members are craftsmen who focus on building one window or door at a time, so they can create custom-built products to fulfill your vision.



We're for quality craftsmanship.

We're for a tradition of excellence that outlasts the latest design fad. The Kolbe story began with a family and a vision. Almost 70 years after the Kolbe brothers began their commitment to producing premium quality windows and doors, products bearing their family name can be found in some of North America's most impressive homes.



We're for innovation.

We're for people who want to take building to new levels of performance, with advancements in not only extraordinary sizes and shapes, but also ground breaking products. We're for creative thinking that redefines what's possible.

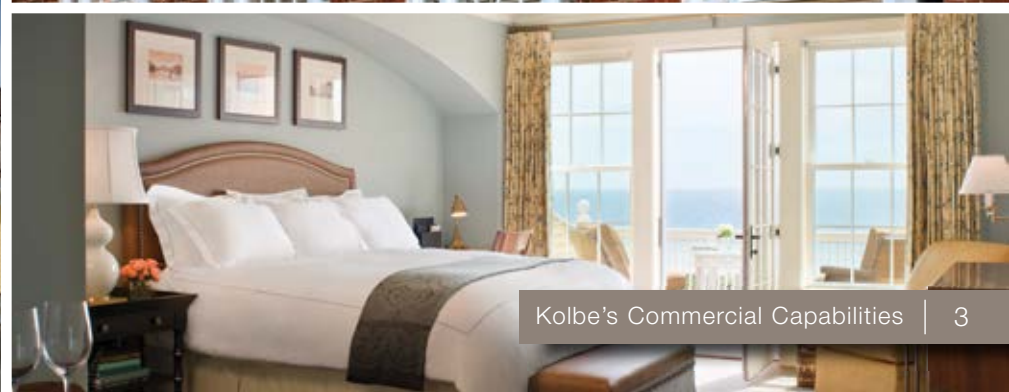
Only Kolbe builds windows and doors that do the things you dream about. We're constantly reimagining our windows and doors to take building to new levels.

Let us bring your vision to life.



Table of Contents

The Kolbe Difference	4-5	Kinlochen Lodge	30
Commercial Projects	6-33	Jefferson Street Inn	31
Wild Turkey Bourbon Visitor Center	6-7	Sandy Beaver Center	32
University of Virginia	8-9	Tivoli Student Union	33
Ocean House Resort Hotel	10-11	Additional Commercial Projects	34-35
Red Eye Brewing Company	12-13	Specialty Products	36-41
Sam Swope Center	14-15	Double Hungs	36
The Grand Theater	16-17	Expansive Views	37
Café Deluxe	18-19	Teutonic™ Series	38-41
WaterColor Beach Club	20-21	Product Options	42-43
University of Minnesota	22-23	Finish Options	44-45
Mount Olive Lutheran Church	24-25	3D Models for SketchUp	46
Turks & Caicos Sporting Club	26	3D Models for Revit®	47
Leigh Yawkey Woodson Art Museum	27	Commercial Project List	48-51
Orleans Hotel	28		
The Inn at Harvard	29		



The Kolbe Difference

We're well-known for our custom capabilities and have worked with many architects to build unique windows and doors. So, whether you're envisioning windows or doors in a special wood species, looking to bring a historical building back to a state of beauty, or planning an unusual shape or grille pattern, we will work with you to find the perfect solution for your needs.



Commercial Capabilities

Each of our windows and doors are built-to-order and uniquely crafted to each project's specifications, providing options and configurations that can be geared toward design solutions for commercial projects. Our technical specialists can help provide support on various aspects of your commercial project.



Historical Renovation

Our reputation of producing high-end windows and doors with attention to intricate details lends itself perfectly to historical renovation projects. Our products are designed to marry traditional design aesthetics with new advances in technology, and we offer numerous options to restore beauty to your project. In addition to providing striking design aesthetics, Kolbe can work with you to meet building codes and historical district requirements.



Energy Efficiency

Kolbe windows and doors are available with a wide variety of glass options to meet your energy needs in any climate. In fact, many Kolbe products meet or exceed ENERGY STAR® guidelines in most climate zones while reducing energy costs for home and business owners.



3D Models

Kolbe offers a full line of SketchUp and Revit® window and door models for design professionals. Models are completely customizable, with the attention to detail you've come to expect from Kolbe. With many libraries to choose from plus added options, you can see why Kolbe's models would be an optimal choice for your next design project.



Sustainable Design

Most components used in Kolbe products are sourced from within 500 miles of our factory, proving we are committed to maintaining ecological sustainability. The species available for our wood products are renewable resources sourced from managed forests, while our aluminum cladding contains 50-75% recycled content and our standard glass contains 25-30% recycled content. In addition, we have achieved FSC® Chain-of-Custody certification (FSC license code FSC-C019541).



Impact Certification

K-Force® impact modifications are available on a number of Kolbe windows and doors. K-Force products are specially designed with the strength and durability to withstand hurricane force winds and flying debris, and are independently tested to meet or exceed strict building codes in coastal regions. There are no unsightly rods or extra locks to fasten, so Kolbe's impact-certified products offer the same beautiful appearance as non-impact products.



Design Options

For almost 70 years, Kolbe products have been all about customization. We offer many options for our windows and doors, including different wood species, custom divided light patterns, tailor-made shapes, and many interior and exterior finishes to perfectly complement the design aesthetic of any project. We're known worldwide for our custom capabilities and have worked with many architects to build distinctive windows and doors – we can help bring your most innovative ideas to life.



Universal Design

Universal design is the concept of creating spaces that are accessible and comfortable for individuals of diverse physical ability levels. Kolbe offers options for a variety of windows and doors that are not only designed to make independent living possible, but to do it with quality, style and flexibility. Kolbe's options such as sill ramps, motorized operators, larger cranks and lever door handles can help make independent living easier.







Wild Turkey Bourbon Visitor Center

Lawrenceburg, KY

Located on a bluff overlooking the Kentucky River, the Visitor Center is the newest addition to the Wild Turkey Bourbon Distillery Complex, one of seven original member distilleries of the Kentucky Bourbon Trail. The 9,140 square foot facility houses interactive exhibits, a gift shop, event venues, a tasting room and administrative offices. Custom Ultra Series beveled direct set windows are an integral component of this building, which was designed as a nod to Kentucky tobacco barns common in the area. Kolbe products, including custom corner windows, helped create a one-of-a-kind building that bridges the gap between tradition & innovation.

Ultra Series extruded aluminum clad beveled direct sets, corner beveled direct sets, geometric windows, and swinging doors with a 70% PVDF fluoropolymer high performance finish in Coal Black and a custom mixed grain fir interior.







University of Virginia

Charlottesville, Virginia

Contributing to the University of Virginia's enduring vision and the architectural tradition established by Thomas Jefferson, Kolbe windows and doors are featured on several campus buildings including the renovated Rouss Hall and Monroe Hall, and the new LEED® Gold certified Bavaro Hall. The construction manager selected and installed over 200 Kolbe windows in just one building, including casements, half-circle, elliptical and other radius units, and Sterling double hungs. The ability of Kolbe to provide multiple types and styles of windows that work in both new construction and historical renovation proves our custom capabilities are virtually unmatched.

Ultra Series extruded aluminum clad Sterling double hungs, push-out casements, and radius units with a 70% PVDF fluoropolymer high performance finish in a custom color; Heritage Series Old World Classic double hungs and Heritage Series triple hungs with true divided lites.





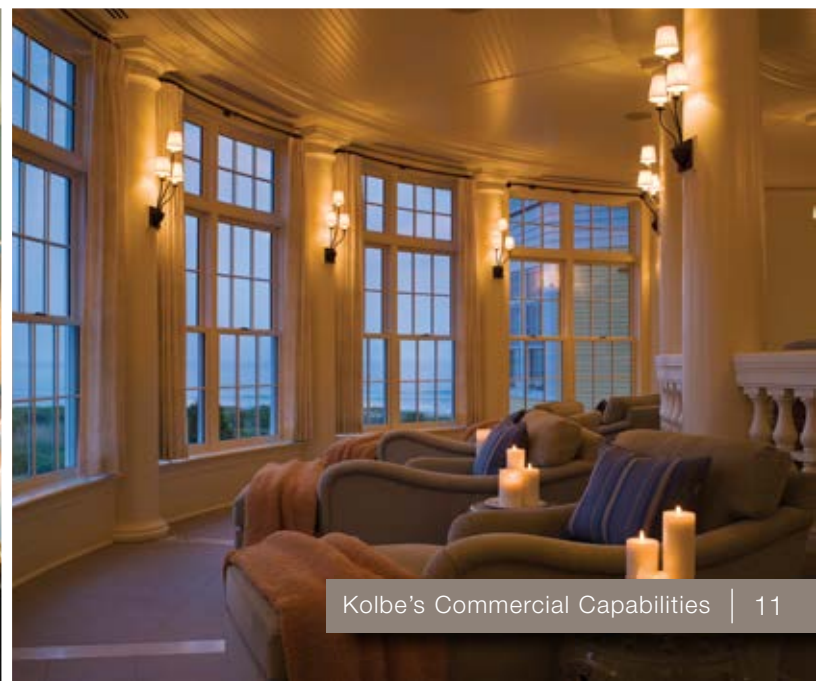


Ocean House Resort Hotel

Watch Hill, Rhode Island

For over 135 years, Ocean House resort hotel offered one of New England's most spectacular ocean views. It required updates and two new wings were added. Structural integrity and hurricane-force protection were of the utmost importance, and ultimately Kolbe windows and doors were selected. Over 500 aluminum clad wood windows and 123 doors were installed, including double hungs with custom curved glass, patio doors, and entrance doors. The original true divided lites were replicated with 5/8" wide performance divided lites. K-Force® impact upgrades did not detract from the traditional styling, and options met ADA requirements.

Ultra Series Sterling double hungs, custom curved glass double hungs, inswing and outswing entrance and patio doors with 5/8" wide performance divided lite bars and K-Force® impact performance upgrades.







Red Eye Brewing Company

Wausau, Wisconsin

At the Red Eye Brewing Company, artisan beer & food are served. This sustainable design project features a wood-burning oven and solar thermal hot water system. Plus, Ultra Series awning windows allow ventilation above the stationary picture windows. Chutney fluoropolymer finish creates a striking exterior, along with 3-1/2" flat extruded aluminum casing. The main entrance doors have glass lites and raised panels, as well as custom moulding and commercial hardware. The French doors that open out to the patio feature full glass lites and 1-1/8" wide PDL bars.

Ultra Series crank-out awnings, picture windows and outswing entrance doors with LoE³-366 glass, Beechwood interior, and Red Wheat interior stain. The patio doors and venting awnings have 1-1/8" performance divided lites, and the exteriors have 3-1/2" flat casing.





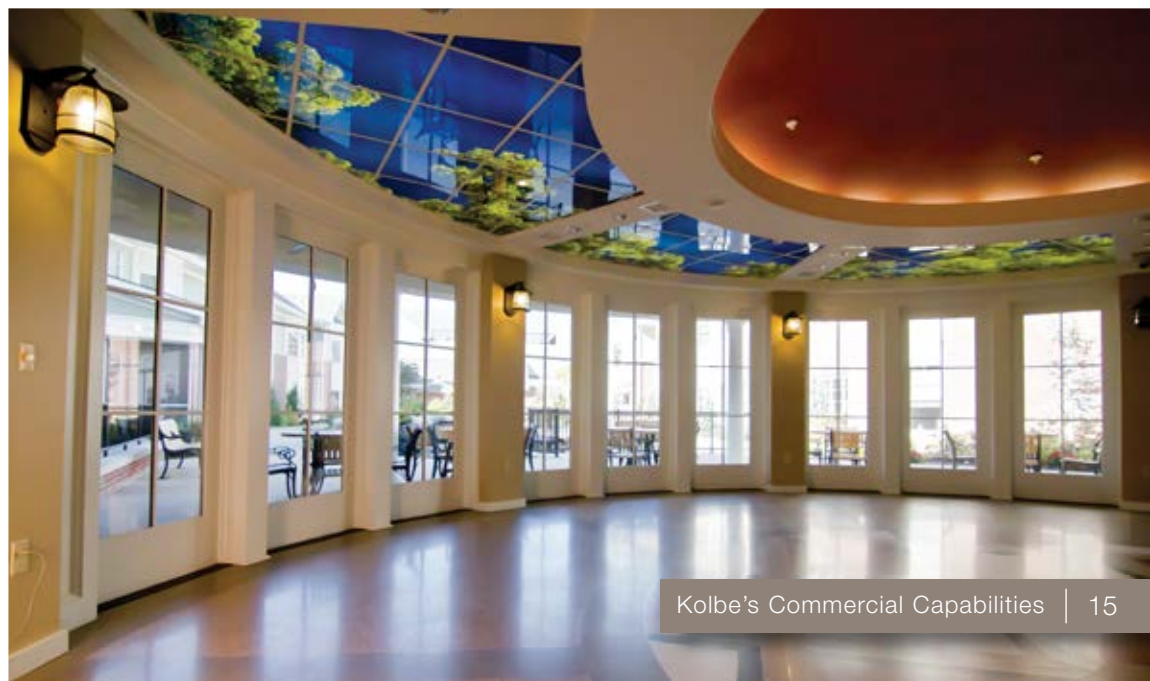


Sam Swope Care Center

Louisville, KY

Since opening in 2011, Sam Swope Care Center at Masonic Homes of Louisville has set a new standard for short-stay recovery and long-term care communities. With the belief that happiness is critical to patient treatment, the Sam Swope Center has an environment that feels more like home than a medical setting. Over 1500 Kolbe Latitude® Series windows and Ultra Series doors have been used on the Masonic Home campus, contributing to the homey feel and giving residents a view of the beautifully landscaped grounds. Though two product lines are used, design consistency is maintained due to Kolbe's attention to detail and quality craftsmanship.

Latitude Series casements, double hungs, studio and radius windows in white vinyl and Ultra Series extruded aluminum clad exterior doors, all with exterior brickmould and 7/8" performance divided lites.





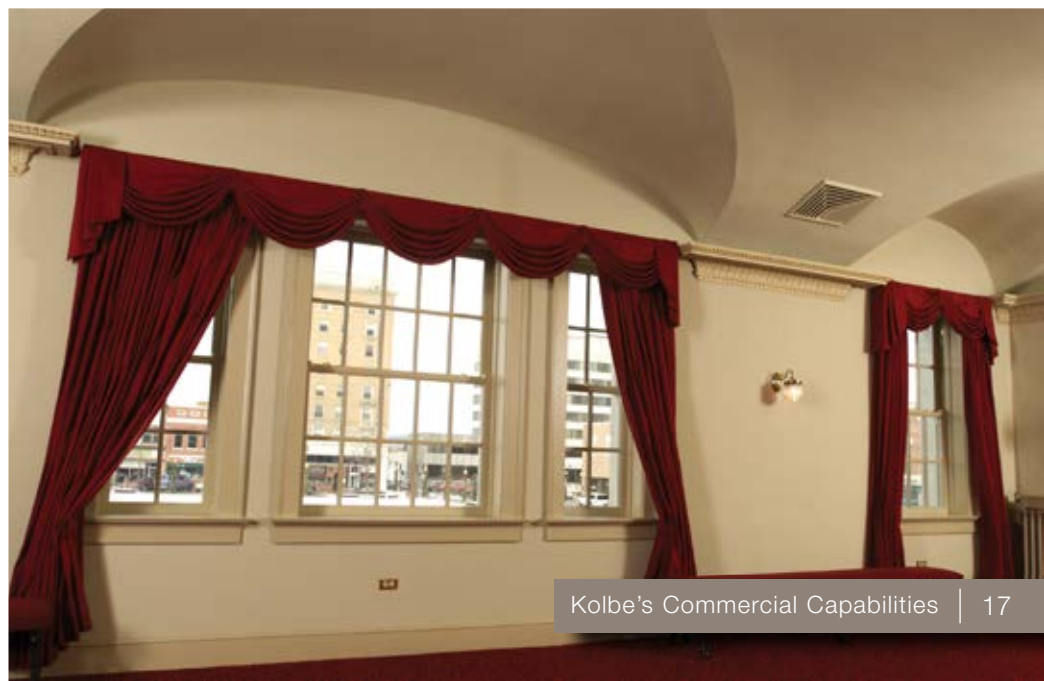


The Grand Theater

Wausau, Wisconsin

The Grand Theater, a landmark building in our hometown of Wausau, Wisconsin, was built in 1927. It served initially as the venue for silent movies, later for motion pictures, and is now a performing arts center. Kolbe was called upon to replicate the double hung windows that had adorned the façade of this majestic building for many decades. Our Old World Classic double hungs were the perfect match, providing all the traditional details from the past, along with convenient operation and increased energy efficiency. The building's historic charm has been magnificently restored.

Heritage Series Old World Classic double hungs and reverse cottage-style double hungs with half-circle tops. 1-1/8" true divided lite bars in a colonial pattern, integral ogee lugs, 2" projected sill nosing, and custom color K-Kron II exterior paint finish.





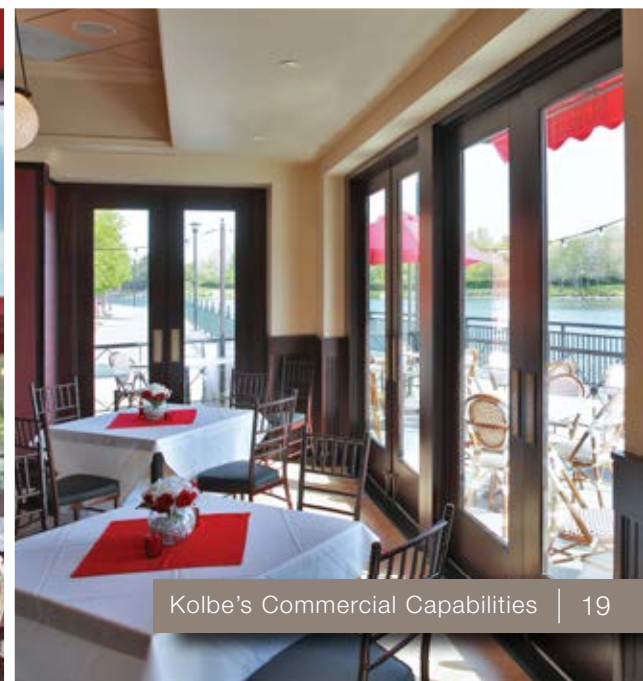


Café Deluxe

Gaithersburg, Maryland

Café Deluxe in Gaithersburg, Maryland's Washingtonian Center features a large indoor/outdoor bar, a lakefront patio for 100 diners, and multiple windows and doors through which to enjoy the beautiful views of the boardwalk. Kolbe provided Café Deluxe's numerous swinging doors, inswing casements and a 15-foot-wide folding window. The folding window opens up the interior bar to the patio and several French doors connect the main dining room to outdoor dining. On the interior, dining rooms are divided by a series of operable windows and doors, which offer open areas, private and semi-private dining.

Heritage Series entrance doors, folding windows, and inswing casements with Vertical Grain Fir interior wood species and a custom stain.







WaterColor Beach Club

WaterColor, Florida

Kolbe windows and doors brought to life the vision shared by both the architect and developer of the WaterColor Beach Club in Florida, part of a 500-acre resort and residential community project near Santa Rosa Beach. Our Ultra Series products met the specifications for this 45,000 square-foot facility overlooking the Gulf of Mexico. Plus, they can withstand the harsh conditions of a saltwater environment. Our 70% fluoropolymer exterior finish ensures that the windows and doors in this spectacular project will remain beautiful over time.

Ultra Series extruded aluminum clad casements and outswing doors with a 70% PVDF fluoropolymer high performance finish in Sand and 7/8" wide performance divided lite bars.





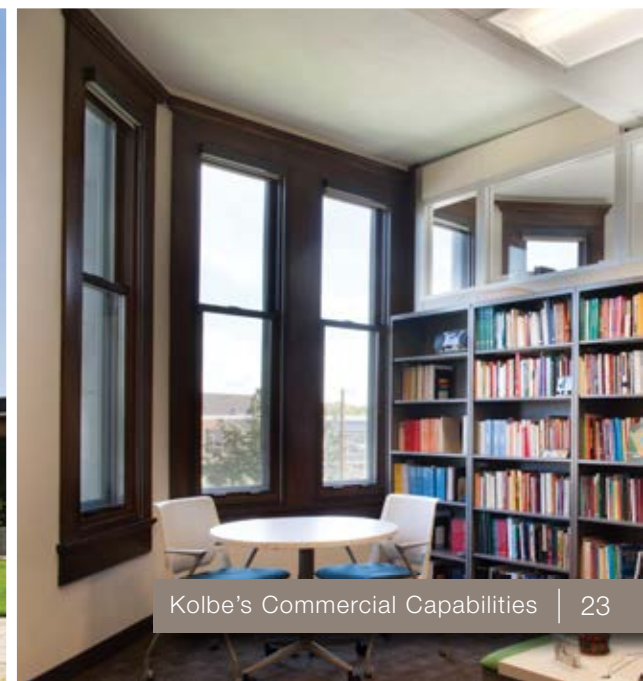


University of Minnesota

Minneapolis, Minnesota

A fixture on the National Register of Historic Places, the University of Minnesota's Folwell Hall underwent three years of extensive renovation in an effort to restore the grandeur of its 1907 Jacobethan architecture. In the 1980s, the building's original wood windows were replaced with a basic, aluminum system, which were not true to the intended historical architectural details. In their place, over 500 Ultra Series Sterling double hungs were installed with custom aluminum panning to reestablish the original architectural vision. Custom safety options such as sash limiters, custodial locks and tempered glass were added to many of the units.

Ultra Series extruded aluminum clad Sterling double hungs with 70% PVDF fluoropolymer high performance exterior finish in a custom color and White Oak interior wood species with a custom color, factory-applied stain.







Mount Olive Lutheran Church

Weston, Wisconsin

A design-build firm created an addition for Mt. Olive Lutheran Church with a 900-seat worship space, offices, a large lobby, and a kitchen preparation area with an adjacent multi-use room. While the original plans called for aluminum storefront products, the architect approved Kolbe's Ultra Series products with wood interiors and extruded aluminum clad exteriors. The ogee direct set profiles met the aesthetic goals, and provide a great deal of daylight. Due to the expansive sizes of the mull units, many required steel supports, which Kolbe was able to provide.

Ultra Series ogee direct set, picture, and quarter-circle windows. The casements are sash set and feature ogee casing, 2-1/4" performance divided lite bars, and 2-1/8" sill nosing. The exterior is clad with extruded aluminum with a 70 % PVDF fluoropolymer high performance finish in Rustic.



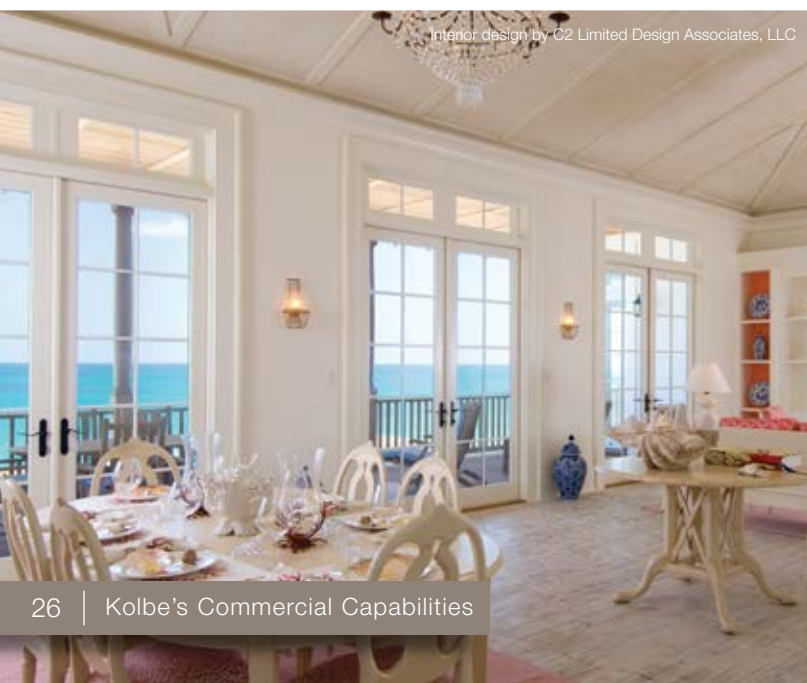


Turks & Caicos Sporting Club

Ambergris Cay, Turks & Caicos Islands

In 2008, the eye of Hurricane Ike passed directly over the Turks & Caicos Sporting Club, a 1,100-acre private community. A few years earlier, Kolbe products had been installed in the 14 exclusive properties, and met strict architectural requirements. Double hungs, casements, exterior doors and paneled French doors also met the aesthetic expectations. When Ike's 140-mile-per-hour winds battered the island, the K-Force® impact certified windows and doors weathered the storm. In fact, Calico Jack's Pavilion, a key gathering spot for residents and visitors, was up and running within days of the hurricane.

Ultra Series crank-out casements, Sterling double hungs, and entrance doors with wood on the interior, extruded aluminum cladding on the exterior, and K-Force® impact performance upgrades.





Leigh Yawkey Woodson Art Museum

Wausau, Wisconsin

The Woodson Art Museum has been enhancing lives through art since it opened in 1976. Housed in a two-story English Tudor home on a four-acre estate, the museum features a permanent collection, educational programs, and changing exhibitions, most notably the annual, internationally-acclaimed Birds in Art show. The museum's founders established what has become the Museum's guiding spirit – the marriage of art and nature. Kolbe windows and doors were chosen for the expansion and renovation project because of their ability to provide beautiful views with artisan-quality craftsmanship. A bank of Kolbe casements overlooks the beautiful gardens, allowing visitors to enjoy the outdoors, even when inside.

Ultra Series extruded aluminum clad casements, transoms, picture windows and outswing commercial doors with a 70% PVDF fluoropolymer high performance finish in Timberwolf and a custom White Oak interior.





Orleans Hotel

Old Sacramento, California

The Orleans, a Gold Rush-era hotel, again takes its place as an iconic building in Old Sacramento. Monighandesign painstakingly recreated the three-story street-front to match the original 1865 architecture. Contributing to the replica, Kolbe provided ten-foot tall, wood double doors that open onto the boardwalk, as well as windows with performance divided lites. Double hungs and casements were chosen for the two-story addition, which is concealed from direct view to preserve the historic façade. It reopened in 2008 as a mixed-use space, including 24 lofts, ground-floor retail, and a high-end restaurant.

Heritage Series oversized wood outswing doors, crank-out casements, and double hungs with 1-1/8" wide performance divided lite bars and a K-Kron II exterior paint finish in Truffle.



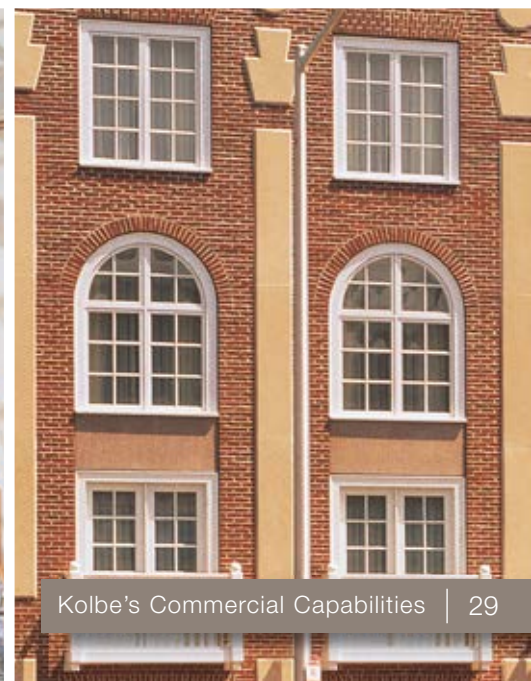


The Inn at Harvard

Cambridge, Massachusetts

Reminiscent of European architecture of the past, this luxury hotel in Cambridge, Massachusetts opened to its first guests in 1990. Located in Harvard Square and adjacent to historic Harvard Yard, the traditional façade and exquisite details of the building blend beautifully with its surroundings. Over 100 custom Kolbe windows and French doors with a rich cherry interior grace this lovely red brick structure. The grand lobby has the feeling of a town square, with windowed balconies overlooking the atrium, and offers an intimate setting in which to relax.

Custom Heritage Series casement windows, quarter-circle transoms, and direct set full-circle windows with sash set, venting awnings in the center. The windows and French doors have Cherry wood on the interior, 1-1/8" true divided lites and brickmould with a backband.





Kinlochen Lodge

Thompsonville, Michigan

Woven into the incomparable northern Michigan landscape at Crystal Mountain Resort, Kinlochen Lodge provides an experience that truly leaves the busy world behind. Offering thirty-six holes of golf, splendid accommodations, superb alpine and Nordic skiing, excellent food, state-of-the-art conference facilities, and entertainment for the entire family, Crystal Mountain's mission is to create an environment in which one can relax, refresh, and renew. The developers of this project chose Kolbe windows to help create the casual-yet-elegant ambience in this resort for all seasons.

Ultra Series casements and transoms with performance divided lites and a 70% PVDF fluoropolymer high performance finish in Chutney.



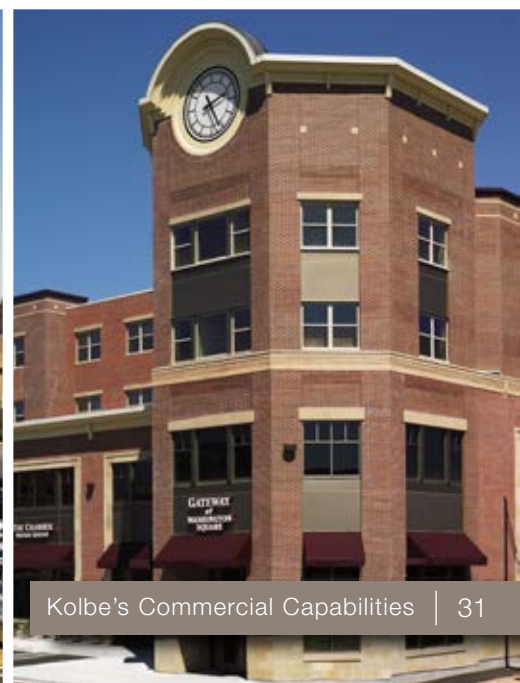


Jefferson Street Inn

Wausau, Wisconsin

Gateway at Washington Square is an impressive addition to Wausau's historic River District. The four-story building houses office spaces, a restaurant, bar, and meeting facilities, as well as the Jefferson Street Inn on the third and fourth floors. Kolbe's Latitude® Series single hungs, studio and picture windows fit well with the understated elegance of the luxury boutique hotel. The multi-chambered extruded beige vinyl windows offer energy efficiency and low maintenance, while keeping with the traditional, historical design. This successful project has helped rejuvenate downtown Wausau.

Latitude Series single hungs, studio and picture windows in beige vinyl with LoE²-270 insulating glass.





Sandy Beaver Center

Gainesville, Georgia

Kolbe windows and doors were selected by the architect for an expansion project to the Riverside Military Academy, a prestigious college preparatory academy founded in 1907. Offering a view that extends from floor to ceiling, this 750,000 square-foot complex combines dormitories, a dining room, administrative offices, and an infirmary. Another facility was built to house a fine arts center, and a modern library was built as well. Featuring over 100 Kolbe units, unique details were incorporated into the project design, and Kolbe's custom capabilities helped bring the design to life.

Ultra Series extruded aluminum clad double hungs, stationary units, radius and geometric units, and outswing doors with a 70% PVDF fluoropolymer high performance finish in Rustic and 7/8" wide performance divided lites.



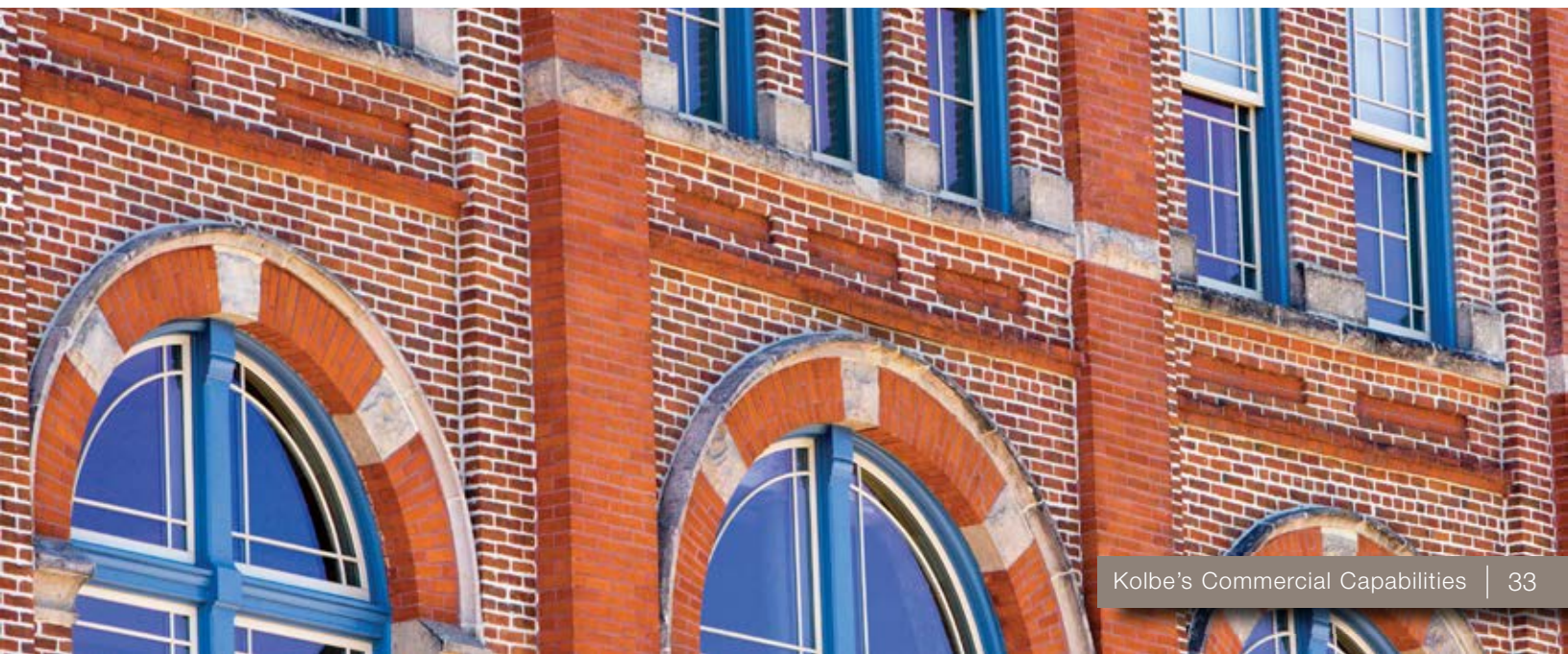


Tivoli Student Union

Denver, Colorado

Originally built in 1866 in an urban area of Denver, these buildings served as a brewery for over a century. Economic hardship forced the brewery to close and the buildings stood vacant for nearly two decades. In the 1990s, the Tivoli site was revitalized and developed as a student union and retail center. Kolbe products were chosen for this massive renovation project due to our extensive custom capabilities. The detail, trim and moulding for each window was made to exactly match the profile of existing units, helping to replicate the original character of this historic landmark.

Ultra Series custom extruded aluminum frame and sash components with a 70% PVDF fluoropolymer high performance exterior finish in a two-tone color scheme – frames are a custom color blue and the sash are Camel. Custom brickmould, sill and mullion extrusions.



Additional Commercial Projects



Camden Station Baltimore, Maryland

As the northern gateway to Baltimore's Oriole Park, it was imperative that a deteriorating Camden Station be restored to the dignified building it once was, and Kolbe windows were an element in rejuvenating this historic landmark. Kolbe was specified by the architect, due to our ability to provide window products that would meet not only the demands for historical authenticity, but also offer greater energy efficiency and resistance to water penetration.



Ribbeck Office Building Lake Charles, Louisiana

Kolbe fixed casements and commercial doors lend a streamlined appearance to this project, while the geometric windows at the apex of the building accent the contemporary design. The diamond pattern of the performance divided lites mirrors the pattern in the brickwork, making sure all of the building elements work together. The distinctive architectural style of this office complex has drawn attention from the local community, winning a Louisiana AIA "Honor of Excellence Award."



Cetrella Bistro & Café Half Moon Bay, California

Located in Half Moon Bay near San Francisco, California, this award-winning restaurant was designed with a simple, yet elegant Mediterranean appearance. From the ochre and soft greens of the facade, to the terra cotta pots brimming with colorful flowers and herbs, the first impression is welcoming. An open concept allows fantastic views, as well as intimate settings. Kolbe wood entrance doors, casements, and awning windows provide a full view of the beautiful surroundings as guests enjoy a gourmet meal with good friends.





Wausau Area Boys & Girls Club

Wausau, Wisconsin

This contemporary facility was designed to provide a warm welcome and safe haven for children in our local community. Kolbe's Ultra Series windows are the perfect complement to the open concept of the architects' design. The Boys & Girls Club is an important non-profit organization, and this club in our hometown provides a positive place for children to have fun.



Hastings City Hall

Hastings, Minnesota

Among the numerous architectural gems in Hastings, Minnesota, is the original Dakota County Courthouse, constructed from 1869-1871. It served as the county seat for over 100 years, and in the 1990s was completely refurbished and turned into Hastings City Hall. Energy efficient Kolbe products were chosen for the renovation, and our custom capabilities allowed us to craft windows that helped preserve the integrity of the building's classic architecture.



Morningside Medical Building

Bend, Oregon

Exquisite detail went into designing the front entrance of this community-based outpatient clinic for veterans and their families. Kolbe's Latitude® Series vinyl windows helped provide a sophisticated finish, from the large, custom direct set radius unit above the main entrance to the head and sill trim surrounding the units. Providing energy efficiency, architectural details, and a full array of options, Kolbe windows were an excellent match for this project.



Specialty Products: Double Hungs

At Kolbe, we care about the big picture as well as the smallest detail. We're constantly innovating to provide products that push the limits of what's possible. Numerous specialty products are available to help take your project to new performance levels.

Double Hungs Beyond the Ordinary

Kolbe offers double hungs to meet virtually every application, from old world aesthetics to massive sizes. Majesta and Sterling double hungs have concealed jamb liners, traditional design, and are available as either Heritage wood or Ultra extruded aluminum clad units.



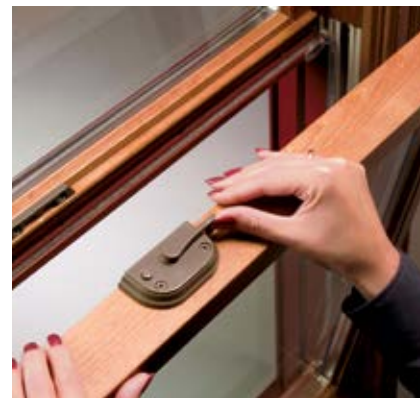
Majesta® Double Hung

Majesta double hungs are designed for massive openings and can reach sizes of up to 6' x 12'. They offer exceptional performance ratings against air, water & structural forces. Units can meet a rating of CW-PG65 for units up to 56" x 96" and LC-PG65 for units up to 60" x 120". Despite the large sizes, Class 5 balances help them operate smoothly.

Sterling Double Hung

U.S. Patents 7,296,381; 7,448,164; 8,196,355 & 8,429,856

Sterling double hungs feature a patented interior wood cover to conceal the jamb liner, while giving windows a rich, full-wood appearance. The lock system boosts performance to a level not often reached by double hung windows – they can meet a rating of LC-PG65 and an impact rating of IPD4. Plus, Ultra Sterling double hungs have attained HVHZ (High-Velocity Hurricane Zone) certification in Florida. Class 5 balances can be incorporated to offer larger size units.



Old World Classic

Heritage Series Old World Classics are old-style wood chain & pulley windows. They have brass pulley systems, solid brass chains, and alloyed weights. This allows incredibly easy operation, due to the proportional balance between the sash and weights. Choose from single, double or triple hungs. Ogee lugs can be integrated into the top sash stiles for historical authenticity.

Specialty Products: Expansive Views

VistaLuxe® Collection

Create an opening that complements your design with the VistaLuxe® Collection from Kolbe. VistaLuxe Collection windows and doors are designed to be mulled together, combining function and style while maintaining clean lines. An industry-leading frame-to-daylight-opening ratio lets the view take center stage through these sleek, sophisticated windows and doors.

An extruded aluminum exterior provides low-maintenance durability, while a wood interior proves modern design can be warm and organic. The VistaLuxe Collection gives architects the flexibility to combine multiple units into unique, compatible configurations, while maintaining symmetry and sightlines. To perfectly match your architectural design and performance requirements, products in the VistaLuxe collection are available in three different profile styles: Flush (*shown at right*), Accent, and Accent Plus.

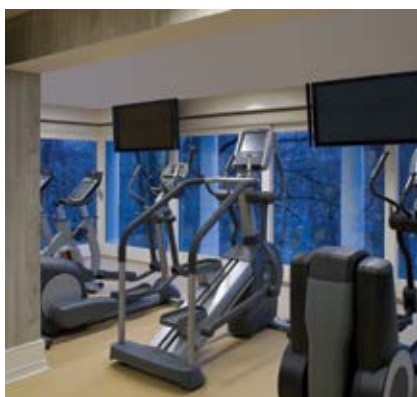


Expansive Openings

Add an expansive scenic addition to your design project with folding windows and doors, TerraSpan® lift & slide doors, or multi-slide doors. Whether in a restaurant, resort, or any other gathering space, these products span massive lengths to combine indoor and outdoor space.

Folding Windows and Doors

Folding windows and doors are available in many configurations, including panels folded to one side, split and folded to either side, floating, and can incorporate swinging access panels or doors. Ultra Series, Heritage Series, and VistaLuxe complementary folding windows and doors are available, for consistency with the other windows and doors in your project.



TerraSpan® Lift & Slide Doors

TerraSpan lift & slide door panels are available in multiple configurations, and can recess into a wall pocket or stack in the opening – even 90° corner units are available. Sill and hardware options are available for TerraSpan doors, as are many of the other aesthetic options available for the Ultra Series.

Multi-Slide Doors

When an expansive opening would be ideal, but space and resources are limited, multi-slide doors are a good choice. Multi-slide doors are available in many configurations, sizes, and with many customizable options to fit any design aesthetic. Ultra Series and VistaLuxe complementary multi-slide doors are available.



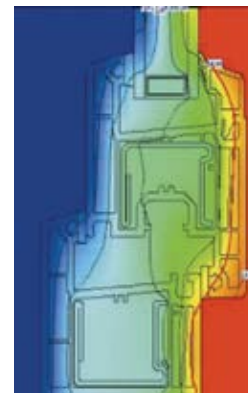
Specialty Products: Teutonic™ Series

The commercial-grade window and door designs within Kolbe's Teutonic Series lead the industry in thermal performance, allowing you to create building envelopes with large window-to-wall ratios that minimize energy loss while reducing condensation, enhancing security and improving acoustic control. The energy performance of the Teutonic Series is simply outstanding, with glass options available to reach total U-values as low as 0.17 for a fixed window. These performance attributes make the Teutonic Series an attractive alternative to all-aluminum systems.

Energy Performance

The energy performance of the Teutonic Series is simply outstanding, with glazing options available that can achieve energy performance ratings up to R5, with U-values as low as 0.20 for a tilt-turn product and 0.17 for a fixed window. The results of using these products in commercial buildings can be seen in lesser HVAC loads and lower heating/cooling costs. The compression seal technology that is used in the design and construction of these products provides a tighter building envelope which also helps improve the building's overall performance.

By visiting the professional library at www.kolbecommercial.com and utilizing the **Energy Database Search**, you can determine what product achieves the highest level of energy performance for your application and geographic location. Based on the product and glass options you choose, the **Energy Estimator** will calculate the energy savings on a commercial building. It allows for the input of information on comparative windows, glazing square footage, and energy costs to calculate an estimated amount of savings that could be realized with the Teutonic Series.



Sustainable Design

Whether using Teutonic Series products in new construction or replacing older aluminum products, the benefits of using these high-performing windows and doors are numerous. The purposeful and practical design of steel-reinforced, thick-wall uPVC frame and sash members provides the core of its strength and functionality in a sustainable building. The uPVC material provides a very long service life and can resist fading over the lifetime of the product. The Teutonic Series can also contribute towards points within the LEED® Rating System.



Commercial Ratings

The Teutonic Series meets many of the same structural performance values that aluminum systems provide, yet far exceeds aluminum on thermal performance. This is accomplished through the unique design and engineering of the series:

- ▶ Fusion-welded corners enhance structural strength and offer a cleaner finish
- ▶ Dual overlapping neoprene gaskets provide a tight seal against air and water infiltration
- ▶ Galvanized steel-reinforced chambers increase structural integrity and performance

Product	Size Tested	DP Rating
Tilt-turn window	48" X 71"	CW-PG80
Fixed window	60" X 99"	CW-PG70
Tilt & Slide door	95" X 83"	LC-PG40
Outswing door	72" X 96"	LC-PG20

Impact Performance

Over the years, strict building codes have been implemented in coastal areas to require the use of high-performing products within structures to withstand these harsh conditions. Teutonic Series windows and doors can be produced in versions that meet the stringent protection requirements in these unforgiving environmental conditions.



Product	Size Tested	DP Rating	Impact Zone
Tilt-turn window	44" X 80"	DP65	IPD4
Fixed window	48" X 98"	DP65	IPD4
Tilt & slide door	96" X 96"	DP80	IPD4
Outswing door*	74" X 98"	DP65	IPD4
Single horizontal or vertical mull	107" X 77"	DP70	IPD4
T-mull or Plus-mull	89" X 96"	DP70	IPD4

* Frame all 4 sides required.
All units must use the North American frame to be impact certified.

STC Ratings

Through the use of thick-walled frame and sash extrusions as well as the gasket system in the compression seal technology, the Teutonic Series delivers ratings much better than the traditional aluminum products found in most commercial settings. Installing laminated glass or triple pane glass units can further increase the sound-blocking performance of these windows and doors. Numerous glass configurations can be utilized, providing a wide range of STC values.

Product Type	Glass Configuration	STC Rating	OITC Rating
Tilt-turn window	1" standard insulated glass	35	29
Tilt-turn window	1" insulated glass with 1/4" laminate	37	29
Tilt-turn window	1" insulated glass with impact laminate	37	33
Tilt-turn window	1-3/8" insulated glass with 1/4" laminate - both panes	43	34
Fixed window	1" standard insulated glass	28	23
Fixed window	1" insulated glass with 1/4" laminate	36	29
Fixed window	1" insulated glass with impact laminate	36	31
Fixed window	1-3/8" insulated glass with 1/4" laminate - both panes	39	28
Tilt & slide door	1" standard insulated glass	31	24
Tilt & slide door	1" insulated glass with 1/4" laminate	36	29
Tilt & slide door	1" insulated glass with impact laminate	36	32
Outswing door	1" standard insulated glass	30	25
Outswing door	1" insulated glass with 1/4" laminate	36	30
Outswing door	1" insulated glass with impact laminate	36	32



Blast Mitigation

Blast mitigation for windows involves the product being able to withstand the vast pressures of an explosives blast along with keeping the glass in the opening, preventing debris and the glass itself from entering the building. Teutonic Series fixed windows and tilt-turn windows have options for blast mitigation. Each of these units meets different performance criteria that have been set by the GSA (General Services Administration). These windows meet the tested requirements for the Unified Facilities Criteria Department of Defense Minimum Antiterrorism Standards for Buildings.

Product Type	Tested Size	Result
Tilt-turn window	35-3/4" x 79-3/4"	Conditions 1 and 2 per GSA criteria†
Fixed window	36" x 79"	Condition 2 per GSA criteria†

†North American frames only.

Specialty Products: Teutonic™ Series

Teutonic Series Tilt-Turn Window

The specialized hardware system of the Teutonic Series tilt-turn allows the sash to tilt inward at the top of the window to provide secure ventilation, or turn into the room, providing a wide opening for even more ventilation or emergency egress. The hardware wraps completely around the sash, providing multiple locking points between the sash and frame. Operational configurations include a standard tilt-turn unit, a tilt only (hopper) unit, or a turn only (inswing) unit.

- ▶ Energy values (unit U-values) from 0.20 – 0.44 can be achieved, depending upon the specific glazing options selected
- ▶ Commercial window (CW) ratings reaching a CW-PG80
- ▶ Impact-rated for IPD4 with a DP65 performance
- ▶ Blast mitigation rated in GSA Conditions #1 & #2
- ▶ STC (Sound Transmission Class) rated up to STC 43



Teutonic Series Fixed Window

The Teutonic Series fixed window is the perfect complement to any of the other units within the series. These high-performing stationary windows can be utilized as a large picture window or can be mullioned to another unit type within the series to create expansive window assemblies.

- ▶ Energy values (unit U-values) from 0.17 – 0.46 can be achieved depending upon the specific glazing options selected
- ▶ Commercial window (CW) ratings reaching a CW-PG70
- ▶ Impact-rated for IPD4 with a DP65 performance
- ▶ Blast mitigation rated for GSA Conditions #1 & #2
- ▶ STC (Sound Transmission Class) rated up to a 39



Teutonic Series Tilt & Slide Door

The Teutonic Series tilt & slide door offers high performance and an alternative to standard swinging doors, especially when space is at a premium. These doors are manufactured with specialized hardware that allows the door panel to tilt inward at the top for secure and easy ventilation. The hardware also allows the door panel to open parallel to the fixed panel and travel smoothly to a fully-opened position. The use of compression seal technology and innovative hardware elevate this unit's performance well above a standard sliding patio door.

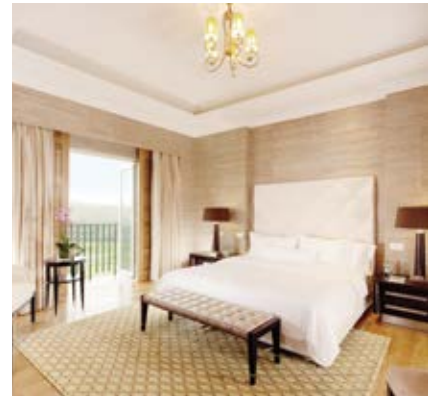
- ▶ Energy values (unit U-values) from 0.22 – 0.44 can be achieved, depending upon the specific glazing options selected
- ▶ Commercial window (CW) ratings reaching a CW-PG55
- ▶ Impact-rated for IPD4 with a DP80 performance



Teutonic Series Outswing Hinged Door

The Teutonic Series outswing hinged door offers high performance in a traditional door configuration. The use of compression seal technology, as used across the entire Teutonic Series, is the basis of product performance design for the swing door.

- ▶ Energy values (unit U-values) from 0.23 – 0.44 can be achieved, depending upon the specific glazing options selected
- ▶ Commercial window (CW) ratings reaching LC-PG20
- ▶ Impact-rated for IPD4 with a DP65 performance



Product Options

K-Force® Impact Products

Specially developed with great strength and durability to withstand hurricane force winds and flying debris, our impact products are designed to have the same beautiful appearance for which other Kolbe products are known. No unsightly brackets or visible rods that hold the sash in place; no extra locks to fasten in order for the units to provide exceptional performance against the elements. K-Force impact products are independently tested to meet or exceed the strict building codes of coastal regions. In fact, some Ultra casements with impact modifications have achieved design pressure ratings of up to 85 psf.



Exterior Brickmould & Casings

Whether you choose wood, clad or vinyl products, we have many exterior brickmould, casing and nosing profiles. If your project demands a unique touch or historical accuracy, we can create custom profiles for most of our products. The trim options are color-matched to the windows as standard. But, for added interest, ask for a color combination between the trim, frames and sash.



Brickmould, casing, and sill nosing are factory-applied as standard to Heritage Series products for convenience on the jobsite. For Ultra and Latitude Series products, brickmould may be ordered factory-applied or it may be field-applied by snapping it into the integral accessory grooves.

Fully-Aligned Sight Lines

Most of Kolbe's complementary units are sash set as standard. This means that, in most instances, the sight lines of windows and doors will align with the transom or radius windows stacked above. Plus, if you choose one of our divided lite options, the bars will align between mullled and stacked units as well. No more "unpleasant surprises" when you stand back to admire the project you've worked so hard to complete. Kolbe also offers direct set transom and radius units.



Glass for All Climates

To achieve energy efficiency across climate zones, we use double pane insulating glass with LoE²-270 coating for most products. For many products we also offer triple pane insulating glass, which can achieve even better energy ratings. These options allow many of our products to meet or exceed energy efficiency standards that qualify for ENERGY STAR® in the USA and/or Canada. In addition, several Kolbe windows have met the ENERGY STAR Most Efficient criteria for 2014. We have many other glass and coating options to choose from, including LoE²-240, LoE³-366, spandrel, tempered, laminated, tinted, patterned, and decorative glass.



Preserve Film to Protect Glass

We also offer the option of Preserve, a protective film applied to both the interior and exterior of insulating glass units. This film not only protects the glass from scratches during transit and construction, but also reduces the time involved in jobsite cleanup.



Divided Lites and Glazing Beads

Commercial projects often require very specific architectural details. Divided lites, grilles and glazing beads can help to successfully achieve your aesthetic goals. Choose a standard colonial pattern or replicate an existing pattern. We can even help create a completely unique pattern.

True Divided Lites

True divided lites are often necessary for projects that must meet rigid historic district regulations. They are available for most Heritage Series wood products in various widths.



Performance Divided Lites

Performance divided lites (PDL) are available for most of our products. Options include various widths, colors and profiles. Beveled profiles are standard, however ovolo and square interior bar profiles are available for many products as well. Plus, wood glazing beads can match those PDL historical bar profiles. The great advantage of PDL is that it simulates a historic look while maintaining energy efficiency.



Finish Options

Interior Wood Species

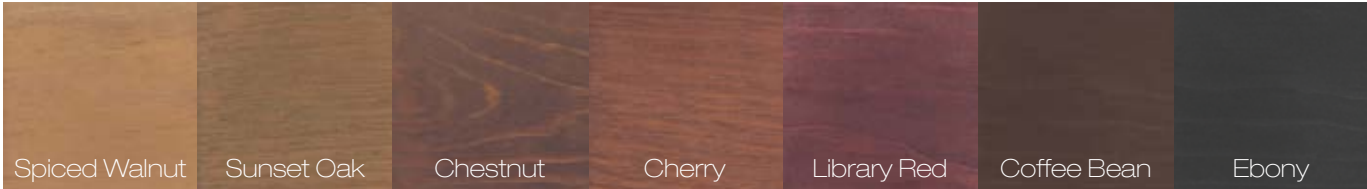
While most of our wood windows and doors are built from pine as standard, we often craft windows and doors from other wood species. Our wood species, including Mahogany, are sourced from managed forests. If a special wood species will enhance the beauty of your project, we'll do our best to achieve your vision. FSC-certified wood species are also available for green building projects. (FSC® license code FSC-C019541)



* Sourced from companies such as Lamboo, Inc.

Interior Finish Options

For units that are ready to install upon delivery, Kolbe's wood windows and doors can be prefinished on the interior with one of the water-based stains or paints shown. Stained units are given two coats of satin finish clear sealer. To enhance the natural beauty of the wood, a double clear coat is also available without stain. Because our interior finishes are water-based, low-VOC stains and paints, you can rest assured you've made an environmentally conscious decision. Custom colors are also available.



Printed images of wood species and stain options will vary from actual product colors. Selections should be made based on color samples available from your Kolbe dealer. Most Latitude Series products are available with a wood look interior in Natural Oak, Natural Cherry, Dark Oak, or White Ash. Stain colors are shown on pine. Since no two trees are identical, wood can be expected to differ both in color and graining. These factors will influence the stain's final color. Interior paint is not available for Latitude, Windquest, or Teutonic Series products. Integral interior colors for Latitude and Windquest Series products include White and Beige. Integral interior colors for Teutonic Series products include White, Beige, and Sand.

Exterior Finish Options

Kolbe's *Heritage Series* wood products can be coated with K-Kron II, an exterior paint finish that offers a way to enhance the crisp, clean look of wood windows and doors. We also offer a heat-reflective polyurethane coating in numerous colors for our *Latitude Series* and *Windquest Series* products. Custom options are also available. Contact your dealer for exterior finish samples.

Exterior Finish Options (continued)

Kolbe's *Ultra Series* and *VistaLuxe® Collection* clad products are finished on the exterior with a commercial-grade, 70% PVDF fluoropolymer coating that meets the requirements of AAMA 2605 specifications – the highest level in the industry. This finish carries up to a 30-year warranty, and many color options (as well as custom colors) are available for design flexibility. Mica finishes are also available for Ultra Series and VistaLuxe Collection clad products, to add dimension and interest to the exterior look. In addition, a variety of unique, anodized exterior finishes are available for Ultra Series and VistaLuxe Collection clad products.



* Coal Black is not available for Heritage Series wood products.

Windquest & Latitude products are either white or beige as standard; the color is an integral part of the vinyl extrusions. They may be finished with most of the colors shown above, with the exception of Ultra Pure White, White, Beige, Antique Red or Patriotic Blue. Windquest Series Miami-Dade NOA certified products include only white vinyl products. Exterior coated or beige vinyl products are not allowed to receive label.

Integral exterior colors for Teutonic Series products include White, Beige, and Sand. Durable Renolit® EXOFOL FX exterior laminate is available in Silver and Bronze.

Some options for our products may have limited color offerings or may incur a nominal charge. Check with your Kolbe dealer for further details on pricing and availability.

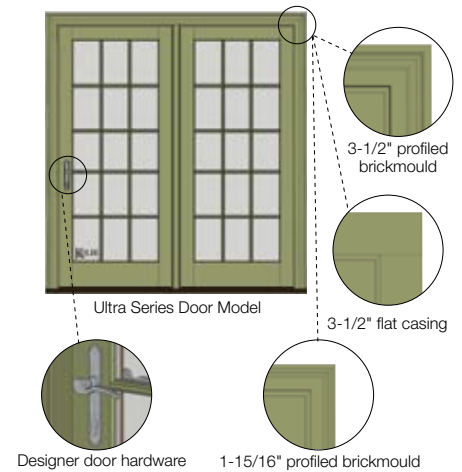
Printed images of exterior finishes may vary slightly from actual colors. Selections should be made based on actual color samples available from your Kolbe dealer.

There is a "color range" with anodized colors. That is, there is an acceptable "light" to "dark" color range that can be experienced on any job. According to AAMA 611-98 specifications, Section 8.3, the range may be up to 5 Delta E's. We can provide from our anodized vendor color samples of this color range if requested. The color range is due to numerous variables which include (but are not limited to) the shape of the parts, alloy variations and time in the anodizing process. This could mean that a sash part may appear slightly different in color than a frame part. This is/will be acceptable. Even the samples that may be provided may vary from the final product due to the variables. You must be aware of this as this will be considered acceptable.

3D Models for SketchUp

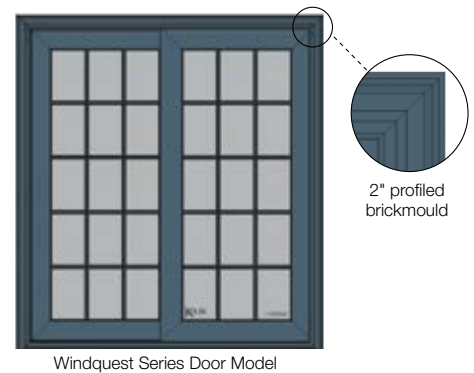
Ultra Series SketchUp Model Features

- ▶ All standard sizes available for all unit types
- ▶ Exterior trim options, including 1-15/16" profiled brickmould, 3-1/2" flat casing and 3-1/2" profiled brickmould – models have layers that allow you to turn these features on or off
- ▶ Performance divided lite options in a colonial pattern allow you to create different configurations by specifying the number of lites high and wide
- ▶ Designer door hardware
- ▶ A wide variety of interior wood species and stains
- ▶ Over 30 exterior colors to choose from



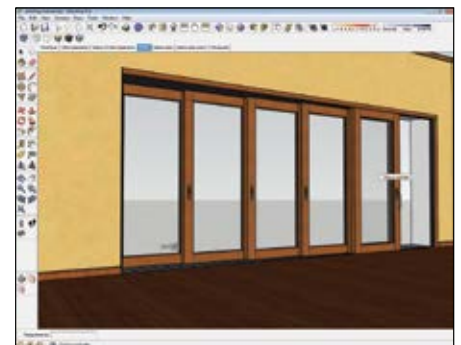
Windquest® Series SketchUp Model Features

- ▶ All standard sizes available for all unit types
- ▶ 2" brickmould – models have layers that allow you to turn this feature on or off
- ▶ Performance divided lite options in a colonial pattern allow you to create different configurations by specifying the number of lites high and wide
- ▶ Over 30 exterior colors to choose from



TerraSpan® Lift & Slide Door SketchUp Model Features

- ▶ Dynamic components – flexible components that have intelligent attributes, relationships, and behaviors. With a dynamic model you can create one component that will have dozens, hundreds, and even thousands of permutations of itself. For example, by changing the model properties in panel height, panel width, and number of panels, you can represent a series of models in one. You also have the ability to open and close the door with just a click of your mouse.
- ▶ Designer door hardware
- ▶ A wide variety of interior wood species and stains
- ▶ Over 30 exterior colors to choose from



Step 1: click the first door panel to activate the door
Step 2: click the panel again to open the first panel

VistaLuxe® Collection SketchUp Model Features

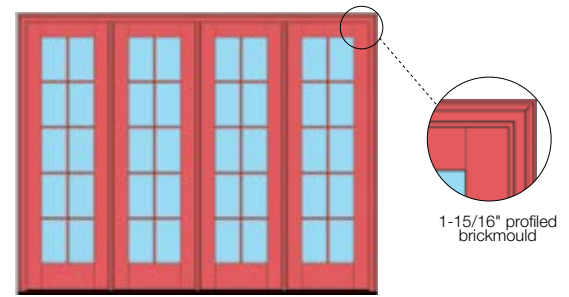
- ▶ Standard sizes available for all unit types
- ▶ Over 30 exterior fluoropolymer finishes
- ▶ 13 mica exterior finishes
- ▶ Kolbe's stain palette on various wood species



3D Models for Revit®

Ultra Series Revit Model Features

- ▶ All models are parametric, meaning you can design objects by modeling their components with real-world behaviors and attributes
- ▶ Models are constructed with 1-15/16" profiled brickmould and sill nosing, with additional casing and sill assemblies available for download
- ▶ Performance divided lite options in a colonial pattern allow you to create different configurations by specifying the number of lites high and wide
- ▶ Over 30 exterior colors to choose from



Ultra Series Door Model

Teutonic™ Series Revit Model Features

- ▶ Models are constructed for both the European and North American frames
- ▶ Double and triple pane models are available for each of the Teutonic Series products
- ▶ Tilt-slide door models are available in both the 2-15/16" and 3-7/8" thick door panels
- ▶ Outswing door models are available in the 3-sided frame with aluminum sill as well as the 4-sided frame



Teutonic Series Tilt & Slide Door Model

VistaLuxe® Collection Revit Model Features



- ▶ Models are constructed for casements, awnings, direct sets, swinging doors, and complementary multi-slide doors
- ▶ Various models within the Flush and Accent styles for casements, awnings and direct sets
- ▶ Complementary multi-slide door models are built with 3" stiles and top rail and 5" bottom rail
- ▶ Models are detailed, yet easy to use



Other Features of Kolbe Revit Models

- ▶ Type catalogs allow you to upload all standard sizes of a product type (example: all standard size casements)
- ▶ Models intelligence allows you to add additional information about the product into the program, including architectural details, product features and options, green building information, impact product data and more

Where To Download Kolbe's 3D Models

- ▶ www.kolbe-kolbe.com
In the Architect Library or on product pages, look for the SketchUp  or Revit icons 
- ▶ seek.autodesk.com
- ▶ CADdetails.com
- ▶ library.smartbim.com

Another Resource for Kolbe SketchUp Models 

- ▶ 3dwarehouse.sketchup.com

Commercial Project List



Assisted Living Facilities

St. Francis Retirement Center	Redwood City	CA
Haven Hospice	Jacksonville	FL
Sam Swope Care Center	Louisville	KY
Kalkaska Memorial Health Center.	Kalkaska	MI
Reformed Ministries Assisted Living	Old Bridge	NJ
Canterbury Village	Orange	NJ
Parker Monroe Assisted Living	Cranbury	NY
Hospice of Lancaster	Lancaster	PA
Spring Arbor Assisted Living	Leesburg	VA
Spring Arbor Assisted Living	Winchester	VA
Stoney River Assisted Living	Marshfield	WI
Greenbrier Manor Assisted Living	Lewisburg	WV

Banks & Financial Institutions

Ameriprise Financial	Tuscaloosa	AL
First Republic Bank	Los Gatos	CA
Weston Savings Bank	Weston	CT
Ameris Bank	Jacksonville	FL
First Landmark Bank	Marietta	GA
Creston National Bank	Creston	IA
American Charter Bank	Elk Grove Village	IL
Old Plank Trail Bank	New Lenox	IL
Hingham Savings Bank	Nantucket	MA
Fifth Third Bank	Elk Rapids	MI
Fifth Third Bank	Suttons Bay	MI
Chase Bank	Montclair	NJ
Chase Bank	Sussex	NJ
BNY Mellon	New York	NY
Summit Bank	multiple loc.	NY
Fulton Bank	Lititz	PA
Omni American Bank Building	Grapevine	TX
First Citizens Bank Branches (100+)	Southeastern	US
Wheat First Securities	Leesburg	VA
Horicon Bank	Oshkosh	WI
Peoples State Bank	Wausau	WI
Meeteetse Bank Building	Meeteetse	WY

Educational Institutions, Museums & Art Centers

University of Alabama	Tuscaloosa	AL
Arizona State University	Tempe	AZ
MacDonald Bldg./Dawson Cole Gtry.	Carmel by the Sea	CA
St. Mary's College	Moraga	CA
Sierra Madre Elementary School	Sierra Madre	CA
Central Middle School Gym	San Carlos	CA
Reagan Ranch Center	Santa Barbara	CA
St. Mary's Academy	Cherry Hills	CO
Tivoli Student Union	Denver	CO
Durango Discovery Museum	Durango	CO
Union Colony School	Evans	CO
Bacon Elementary School	Fort Collins	CO
Blevins Junior High School	Fort Collins	CO
Colorado State University	Fort Collins	CO
Heath Junior High	Greeley	CO
Timnath Elementary School	Timnath	CO
Spanish Peaks Library	Walsenburg	CO
Yale University	New Haven	CT

Connecticut College	New London	CT
Washington Lab School	Washington	DC
Flagler College	St. Augustine	FL
Lightener Museum	St. Augustine	FL
St. August. Pirate & Treasure Museum	St. Augustine	FL
University of Georgia	Athens	GA
Georgia Tech	Atlanta	GA
Oatland Island Wildlife Center	Savannah	GA
Abraham Baldwin Agricultural College	Tifton	GA
University of Iowa	Iowa City	IA
Four Rivers Environmental Edu. Ctr.	Channahon	IL
Loyola University	Chicago	IL
University of Chicago	Chicago	IL
Max McGraw Wildlife Foundation	Dundee	IL
University of Kentucky	Lexington	KY
Thayer Academy	Braintree	MA
Harvard University	Cambridge	MA
Annapolis Elementary School	Annapolis	MD
St. John's College Library	Annapolis	MD
Johns Hopkins University	Baltimore	MD
Loyola College	Baltimore	MD
University of Maryland	Baltimore	MD
St. Mary's College of Maryland	College Park	MD
Lighthouse Youth Center	St. Mary's City	MD
Betsy Lane Oliver Art Center	Elk Rapids	MI
Ramsdell Theatre	Frankfort	MI
University of Minnesota	Manistee	MI
Art Space Northern Warehouse	Minneapolis	MN
Pembroke Private School	St. Paul	MN
Northwest MS Community College	Kansas City	MO
University of NC Asheville	Senatobia	MS
University of NC Chapel Hill	Asheville	NC
Wicker School	Chapel Hill	NC
Blair Academy	Sanford	NC
The Lawrenceville School	Blairstown	NJ
NJ Institute of Technology	Lawrenceville	NJ
Lawrenceville School Campus	Newark	NJ
Princeton University	Pennington	NJ
Pease Library	Princeton	NJ
Kean University	Ridgewood	NJ
The Pratt Institute	Union	NJ
Governor's Island Welcome Center	Brooklyn	NY
Grant's Tomb	New York	NY
Syracuse University	New York	NY
Westhampton Free Library	Syracuse	NY
YWCA	Westhampton Beach	NY
Ohio University	White Plains	NY
Miami University	Athens	OH
Steele Mansion	Oxford	OH
Alton Mill Arts Centre	Painesville	OH
Guelph Civic Museum	Alton	ON
Laurentian University	Guelph	ON
Upper Canada College	Sudbury	ON
Trillium Farm Old School Building	Toronto	ON
University of Oregon	Corvallis	OR
Lebanon Valley College	Eugene	OR
Bryn Mawr College	Anncville	PA
	Bryn Mawr	PA



Dickinson College	Carlisle	PA	Crystal Downs Club House	Crystal Lake	MI
Gettysburg College	Gettysburg	PA	Crystal Downs Golf Shop	Frankfurt	MI
Haverford College	Haverford	PA	Grand Traverse Yacht Club	Traverse City	MI
Indiana University of PA	Indiana	PA	Yellowstone Club Sales Center	Big Sky	MT
Thaddeus Stevens College of Tech.	Lancaster	PA	Ridgewood Country Club	Ridgewood	NJ
Haverford College	Norristown	PA	Barrie Country Club	Barrie	ON
University of Pennsylvania	Philadelphia	PA	Mad River Golf Club	Creemore	ON
Rosemont College	Rosemont	PA	Ovinbyrd Golf Club	Muskoka	ON
Swarthmore College	Swarthmore	PA	Otter Creek Golf Club	Otterville	ON
Villanova University	Villanova	PA	Rosedale Golf Club	Toronto	ON
Hope High School	Providence	RI	Weston Golf Club	Toronto	ON
Rhode Island School of Design	Providence	RI	Merion Golf Club	Ardmore	PA
Clemson University	Clemson	SC	Carnegie Abbey Club House & Condo	Jamestown	RI
Estill Library	Estill	SC	Atlantic Beach Club	Middletown	RI
Redlin Art Center	Watertown	SD	Carnegie Abbey Golf Course	Middletown	RI
Vanderbilt University	Nashville	TN	Clam Bake Cub	Middletown	RI
Southern Methodist University	Dallas	TX	Rose Hill Tennis Center	Bluffton	SC
Galveston Art Center	Galveston	TX	Caicos Islands		
Virginia Tech	Blacksburg	VA	Glenmore Country Club	Charlottesville	VA
Jefferson School City Center	Charlottesville	VA	Greensprings Country Club	Williamsburg	VA
University of Virginia	Charlottesville	VA	Turks & Caicos Sporting Club	Ambergris Cay	Turks & Caicos Islands
Chatham Hall	Chatham	VA			
Longwood College	Farmville	VA	Government & Parks		
Randolph Macon Academy	Front Royal	VA	Flagstaff Court House	Flagstaff	AZ
Washington & Lee	Lexington	VA	Fernie City Hall	Fernie	BC
Middleburg Library	Middleburg	VA	Crocker Guard Station	Lake Davis	CA
4-H Center Headquarters	Richmond	VA	CA State Fish & Game Office & Lab	Placerville	CA
Hollins College	Roanoke	VA	D.L. Bliss State Park Ranger Station	Tahoma	CA
Susquehanna University	Sellingsgrove	VA	Custom House Federal Building	Denver	CO
William & Mary College	Williamsburg	VA	20th Street Recreation Center	Denver	CO
Newport Way Library	Bellevue	WA	Lafayette Fire Station #2	Lafayette	CO
Robert Frost Elementary School	Kirkland	WA	Loveland Fire Station #6	Loveland	CO
Seattle Aquarium	Seattle	WA	Algerian Chancery	Washington	DC
Hatley Branch Library	Hatley	WI	Embassy of Botswana	Washington	DC
Necedah Public Library	Necedah	WI	Embassy of Costa Rica	Washington	DC
The Grand Theater	Wausau	WI	Nigerian Embassy	Washington	DC
Leigh Yawkey Woodson Art Museum	Wausau	WI	Smithsonian Archives & Office Bldg.	Washington	DC
Carnegie Hall	Lewisburg	WV	Swedish Embassy	Washington	DC
University of Wyoming	Laramie	WY	Historic Fire Station	Palm Beach	FL
			Palm Beach Historic Fire House	Palm Beach	FL
			St. Augustine City Hall	St. Augustine	FL
Golf, Country, Tennis, Yacht & Ski Clubs			Bourbon County Courthouse	Paris	KY
Quail Lodge Golf Club	Carmel Valley	CA	Chelmsford Town Hall	Chelmsford	MA
Angeles National Golf Club House	Sunland	CA	Fenway Park	Boston	MA
La Rinconada Country Club	Los Gatos	CA	Nantucket Public Safety Complex	Nantucket	MA
Noroton Yacht Club	Noroton	CT	U.S. Coast Guard	Nantucket	MA
Jupiter Island Club	Jupiter	FL	Governor's Mansion	Annapolis	MD
WaterColor Beach Club	WaterColor	FL	Maryland Income Tax Building	Annapolis	MD
Capital City Club	Atlanta	GA	Maryland Treasury Building	Annapolis	MD
Bolingbrook Golf Club	Bolingbrook	IL	Harford County Building	Bel Air	MD
Horseshoe Bend Golf Club	Atlanta	GA	Prince Georges County Fire Station	Bowie	MD
Frederica Golf Club	Sea Island	GA	Indian Head, Naval Sfc. Warfr. Ctr.	Indian Head	MD
Martha's Vineyard Golf Club House	Edgartown	MA	Point Betsie Lighthouse Shop	Frankfurt	MI
Rolling Road Country Club	Baltimore	MD	John Ball Zoo, Treehouse Ctr.	Grand Rapids	MI
Harborview Marina & Yacht Club	Baltimore	MD	Ludington State Park Beach House	Ludington	MI
Lakewood Country Club	Rockville	MD	Marshall City Hall	Marshall	MI
Norbeck Country Club	Rockville	MD	Traverse City Commons	Traverse City	MI
Baltimore Country Club	Timonium	MD			

Commercial Project List



Traverse City Chamber of Comm.	Traverse City	MI	Rolling Hills Farm	Westport	NY
Traverse City Visitors' Center	Traverse City	MI	21C Hotel	Cincinnati	OH
Marine Corps Air Station Cherry Pt.	Havelock	NC	Castle Hill Beach Cottages	Newport	RI
Chatham County Court House	Pittsboro	NC	The Chanler at Cliff Walk	Newport	RI
Stoney Brook Millstone Assoc.	Pennington	NJ	Ocean House Resort Hotel	Watch Hill	RI
Defiance County Jail	Defiance	OH	Weekapaug Inn	Westerly	RI
Ancaster Fairgrounds Pavilion	Ancaster	ON	Gaylord Opryland Hotel	Nashville	TN
Seaforth Town Hall	Seaforth	ON	Liberty Hotel	Cleburne	TX
Italian Consulate	Toronto	ON	Shenandoah Hotel	Roanoke	VA
Kortright Center for Conservation	Woodbridge	ON	Jefferson Street Inn	Wausau	WI
Woodstock Town Hall	Woodstock	ON	Greenbrier Spa	Greenbrier	WV
Letterkenney Army Depot	Chambersburg	PA			
Newport Public Boaters Facility	Newport	RI	Medical Facilities		
Roger Williams Zoo	Providence	RI	Monterey Penin. Ortho/Sports Med.	Monterey	CA
Georgetown County Courthouse	Georgetown	SC	Visiting Nurse & Hospice Care	Santa Barbara	CA
Coolidge Park Carousel Building	Chattanooga	TN	Boise V.A. Medical Center	Boise	ID
Frank E. Moss Federal Courthouse	Salt Lake City	UT	St. Luke's Regional Medical Center	Boise	ID
Randolf Macon College	Ashland	VA	Timonium Medical Center	Bethesda	MD
Longwood Technology Center	Farmville	VA	Café Deluxe	Gaithersburg	MD
Fredericksburg Courthouse	Fredericksburg	VA	Old Line Center	Waldorf	MD
Fort Monroe General's Residence	Hampton	VA	Munson Manor Hospitality House	Traverse City	MI
Southside Community College	Keysville	VA	La Esquina Medical Center	Santa Fe	NM
Stonewall Jackson Firehouse	Manassas	VA	Ronald McDonald House	Portland	OR
Washington Bldg., VA State Offices	Richmond	VA	Blue Ridge Interceptive Center	Roanoke	VA
Virginia Dept. of Transportation	Rocky Mount	VA			
Army National Guard Readiness Ctr.	Walla Walla	WA	Restaurants/Wineries		
County Commissioner's Office Bldg.	Martinsburg	WV	Mastro's Steakhouse	Palm Desert	CA
Bayfront Bed & Breakfast	St. Augustine	FL	Starlane Winery	Santa Barbara	CA
			Columbia Restaurant	St. Augustine	FL
Hotels, Resorts & Spas			Pizza Time	St. Augustine	FL
Marriott Grand Hotel	Fairhope	AL	Eddie's Bar & Grill	Coeur d'Alene	ID
Battle House Renaissance Mobile	Mobile	AL	Lou Malnati's Pizzeria	Schaumburg	IL
Ventana Inn & Spa	Big Sur	CA	Anejo Restaurant	Falmouth	MA
Hotel Los Gatos	Los Gatos	CA	Blue Corn Restaurant & Brewery	Santa Fe	NM
Orleans Hotel	Old Sacramento	CA	Josh's Ranch House Bar-B-Q	Santa Fe	NM
Vintage Inn, Sutter Home Winery	St. Helena	CA	Chateau des Charmes Winery	Niagara-on-the-lake	ON
Hotel Jerome	Aspen	CO	Peller Estates Winery	Niagara-on-the-lake	ON
Garden of the Gods Resort	Colorado Springs	CO	Ducharme Winery	Niagara-on-the-lake	ON
Biltmore Hotel	Coral Gables	FL	Pickel Barrel Restaurant	Toronto	ON
Bayfront Bed & Breakfast	St. Augustine	FL	Sokol Blosser Winery	Dayton	OR
St. Augustine Inn	St. Augustine	FL	Alexana Winery	Newberg	OR
Birchwood Inn	St. Petersburg	FL	Tony Mandola's Restaurant	Houston	TX
Imperial Hotel	Atlanta	GA	Red Eye Brewing Company	Wausau	WI
Winecoff Hotel	Atlanta	GA			
Cloister Hotel & Resort	Sea Island	GA	Miscellaneous & Retail		
Inn at Harvard	Cambridge	MA	Chula Vista Olympic Training Ctr.	Chula Vista	CA
Chatham Bars Inn	Chatham	MA	Los Gatos Plumbing Supply	Los Gatos	CA
Admiral Fell Inn	Baltimore	MD	Ebner Hotel (retail & offices)	Old Sacramento	CA
South Mountain Inn	Boonesboro	MD	D'arrigo Co. Bros. Corp. Offices	Salinas	CA
Kinlochen Lodge	Thompsonville	MI	Cardinal Mill	Boulder	CO
Herkimer Hotel	Grand Rapids	MI	REI Flagship Store	Denver	CO
Kootenai Lodge & Resort	Big Fork	MT	Restoration Hardware	Greenwich	CT
Candlewood Suites	Bluffton	NC	TransAfrica	Washington	DC
Virgin Spa at Natirar	Peapack	NJ	Sandy Beaver Center	Gainesville	GA
Hotel Parq Central	Albuquerque	NM	Frederica Real Estate Office	Sea Island	GA
Hotel Santa Fe	Santa Fe	NM	Melaleuca Corp. Headquarters	Idaho Falls	ID
Santa Fe Motel	Santa Fe	NM	Yellowstone Plaza	Idaho Falls	ID



Wild Turkey Bourbon Visitors Center	Lawrenceburg	KY	Moline Apartments	Moline	IL
Cunard Building	Boston	MA	Benton Terrace Condos	Naperville	IL
CVS	Boston	MA	Meadow Ridge Condos	Northbrook	IL
Calvert St. Office Bldg.	Baltimore	MD	Trolley House Condos	Boston	MA
Camden Yards Train Station	Baltimore	MD	Village at Homeland	Baltimore	MD
Charlevoix Community Foundation	East Jordan	MI	Baker Lofts	Grand Rapids	MI
Main Street Center	East Jordan	MI	New Town Development	St. Charles	MO
Evergreen Day Care	Holland	MI	Margaret Building	Omaha	NE
City Market Center	Kalamazoo	MI	Steinbach Building	Asbury Park	NJ
Briny Building	Manistee	MI	Pierreport	Brooklyn	NY
Schmidt Realty	Traverse City	MI	Regency at Lawrence	Lawrence	NY
Peer House	Minneapolis	MN	Warburton-Wells	Mamaroneck	NY
JLF & Associates Office	Bozeman	MT	Puck Building	Manhattan	NY
Montana Tile & Stone	Bozeman	MT	Washington & Greenwich St.	Manhattan	NY
PTA Thrift Store	Carrboro	NC	36 Bleecker Street	Manhattan	NY
Lincoln/Washington Street Bldg.	Santa Fe	NM	80th Street & Lexington	Manhattan	NY
Brooklyn Navy Yard – GMC	Brooklyn	NY	812 Greenwich Street	Manhattan	NY
Dykes Lumber Company	Hawthorne	NY	Mills at High Falls	Rochester	NY
Pottery Barn	Huntington	NY	Susan B. Anthony District Bldgs.	Rochester	NY
Warburton Wells Building	Yonkers	NY	Metro Housing Authority	Cleveland	OH
241 Lakeshore East	Oakville	ON	Lexington Apartments	Portland	OR
Penguin Industries	Coatsville	PA	Heinz Lofts	Pittsburgh	PA
Narragansett Towers	Narragansett	RI	Bristol Condos	Charleston	SC
Swan Point Cemetery	Providence	RI	Factors Walk Luxury Condos	Charleston	SC
Max Mehl Building	Fort Worth	TX	Buckingham Village	Arlington	VA
Firehouse Square Office Building	Alexandria	VA	Westover Apartments	Arlington	VA
Plasters Commercial Building	Leesburg	VA	Sycamore House	Ashburn	VA
Baskets Etc.	Roanoke	VA	Country Club Apartments	Leesburg	VA
Whitehorse Auto Wash	Warrenton	VA	Rolling Oaks Condos	Manassas	VA
Red Canoe Credit Union	Castle Rock	WA	Malvern Manor Apartments	Richmond	VA
Coldwell Banker Offices	Greenville	WI	Jun Villa Condos	Seoul	So. Korea
Rothschild Pavilion	Rothschild	WI			
312 2nd Street	Laramie	WY			
Pier One Stores	United States and Canada	Canada			
The Grange	Clarksburg	ON			
Old Bridle Shop	Dundas	ON			
Loredo Farms	Southgate	ON			
Royal Caribbean Port	Falmouth	Jamaica			
Multi-Family & Urban Development					
Colony at Grand Luxury Condos	Fairhope	AL			
Hacienda Desert Mtn. Condos	Scottsdale	AZ			
Hope VI Housing Project	Tucson	AZ			
Park Hamilton Condos	Beverly Hills	CA			
Orleans Hotel	Old Sacramento	CA			
Sainte Claire Building	San Jose	CA			
Bancroft Place	Washington	DC			
Village of Baytowne Wharf	Sandestin	FL			
Bridges of Watersound Condos	Seagrove Beach	FL			
Windsor Village Centre	Vero Beach	FL			
Atlantic Station	Atlanta	GA			
Creston Apartments	Creston	IA			
River Street Plaza Condos	Aurora	IL			
Fulton Place Condos	Chicago	IL			
Clocktower Pointe Condos	Countryside	IL			
Brookwood Luxury Condos	Des Plaines	IL			
Clock Tower Point Condos	Harwood Heights	IL			
			Religious Institutions		
			Holy Spirit Church	Sacramento	CA
			German Congregational Church	Longmont	CO
			First Congregational Church	Loveland	CO
			Masonic Temple	Washington	DC
			Birmingham United Methodist	Alpharetta	GA
			St. Mary's Episcopal Church	High Point	NC
			Ascension Evangelical Lutheran	Baltimore	MD
			Christ Episcopal Church	Columbia	MD
			First Presbyterian Church	Elk Rapids	MI
			United Methodist Church	Paoli	PA
			Westminster Presbyterian Church	Upper St. Clair	PA
			Westminster Presbyterian Church	West Chester	PA
			Bruton Parish Episcopal Church	Williamsburg	PA
			Fairfax Presbyterian Church	Fairfax	VA
			Harmony United Methodist	Hamilton	VA
			St. Frances De Sales Church	Purcellville	VA
			Crestwood Presbyterian Church	Richmond	VA
			Ironbridge Baptist Church	Richmond	VA
			South Minster Church	Richmond	VA
			First Baptist Church Ministry	Roanoke	VA
			Calvary Baptist Church	Winchester	VA
			Good Shepherd Lutheran Church	Woodbridge	VA
			Zion Church	Fond du Lac	WI
			Sacred Heart Cathedral	Charlestown	WV



For professionals: www.kolbe-kolbe.com
For homeowners: www.kolbewindows.com

KOLBE
WINDOWS & DOORS

1323 S. 11th Avenue | Wausau, WI 54401-5998
715.842.5666

© 2014 Kolbe & Kolbe Millwork Co., Inc. Kolbe & Kolbe Millwork Co., Inc. reserves the right to change specifications without notice. The photography featured herein does not necessarily imply an endorsement of Kolbe products by the property owners. Photography used may not represent current Kolbe product features and options.
Center cover photo courtesy of De Leon & Primmer Architecture Workshop.
Right cover photo courtesy of Kenneth M Wyner Photography, Inc.
Back cover photo interior design by C2 Limited Design Associates, LLC.